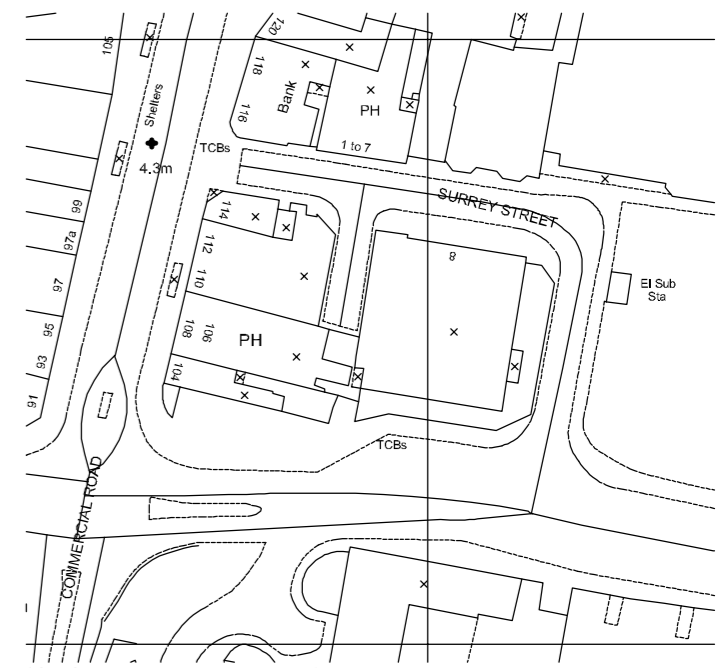


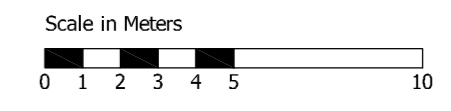
Commercial Road

LOCATION PLAN



NOTES

OS LICENSE No. 100020449



Key

- 1. Boiler Flues
- 2. HV Access point (paved panel)
- 3. CHP/Emergency Generator flues
- 4. Ventilation Grille (chillers)
- 5. Coffee Franchise Unit

TO BE READ IN CONJUNCTION WITH LANDSCAPE ARCHITECTS DRAWING D1694.L.100

Revision	Date	Description	Dwn	Chkd
P1	Sep 08	Issued as part of Planning Application	JCB	



Brankesmere House  
Queens Crescent, Southsea  
Portsmouth PO5 3HT  
Hampshire England  
Tel: (023) 927 55 333  
Fax: (023) 927 55 222  
E-Mail: mail@plcarchitects.com  
Web: www.plcarchitects.com

Client:  
**Robert Gamlen**

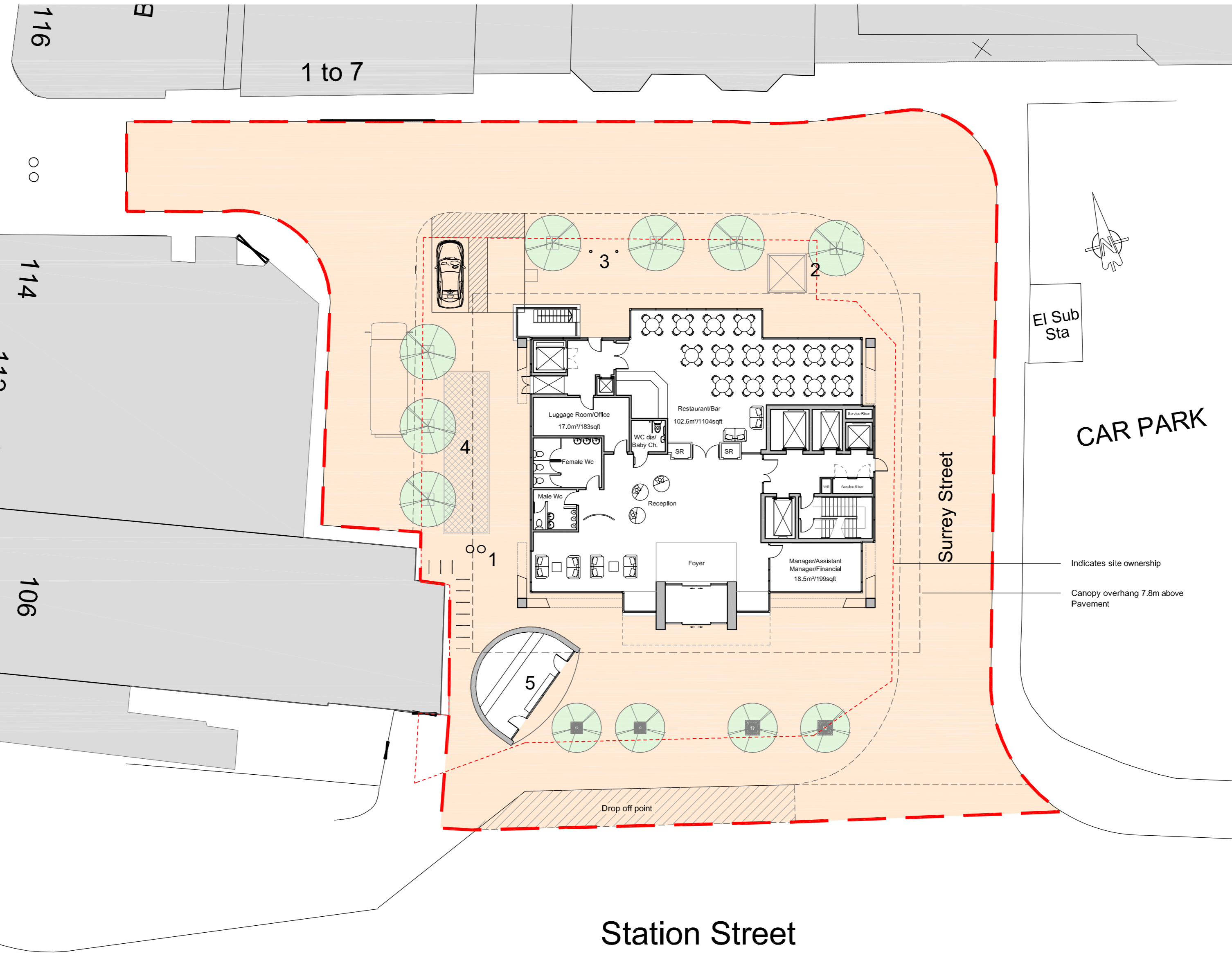
Project:  
Proposed 4\* Hotel  
Number One, 8 Surrey Street  
Portsmouth

Drawing Title:  
Proposed Site Layout

Drawn By	Date	Checked By	Date	Approved By	Date
JCB	Sep 08				

Drawing No.	Revision	Scale
05-1590-172	P1	1:200

PLC ARCHITECTS © COPYRIGHT RESERVED 2008  
NOT TO BE SCALED. DIMENSIONS TO BE CHECKED ON SITE  
SCALING ONLY FOR LOCAL AUTHORITY PURPOSES



Proposed Ground / Site Plan

Station Street

# NUMBER ONE, PORTSMOUTH - PROPOSED HOTEL DEVELOPMENT

E:\2005 Jobs\1190 - Number One Portsmouth\Current Drawings\100 Series Plot Files\Planning Application\05-1190-172-P1.dwg